



Product: Can-Am Defender Limited/Cab Stereo Kit

Disclaimer: Amp is set with default MCE settings and may need to be changed in some cases based on your device you are using to play media.

Instructions:

Prep Steps

- Under the Passenger seat or Rear Passenger seat remove the two twist pins to access the battery. Remove the power and ground wires from the battery being sure the leads do not cross.
- Remove the front plastic headliner by removing the T30 bolts qty-8. Two on each side by the doors, two top center, and two lower center (through mirror mount in most cases). If you have an existing stereo and speakers be sure to remove carefully and unhook items as you pull the plastic headliner off.



Thank you for your purchase.

For a list of more products we offer please visit marqcadeng.com or message us on facebook at marqCAD Engineering if you don't see what you are looking for on the website.



- If you are working with a max machine you will need to remove the center plastic transition cover by removing the T20 Qty-8 bolts.



Thank you for your purchase.

For a list of more products we offer please visit marqcadeng.com or message us on facebook at marqCAD Engineering if you don't see what you are looking for on the website.

- Remove the dome light by loosening and removing the two bolts ($7/32$ " Socket). Disconnect the two bullet connectors for the dome light.



- Remove the front headliner by removing the T20 Qty-2 bolts and pulling the headliner out from under the mounting brackets. For Non-Max machines there will be an additional 2 bolts in the back corners that will need to be removed as well.



Thank you for your purchase.

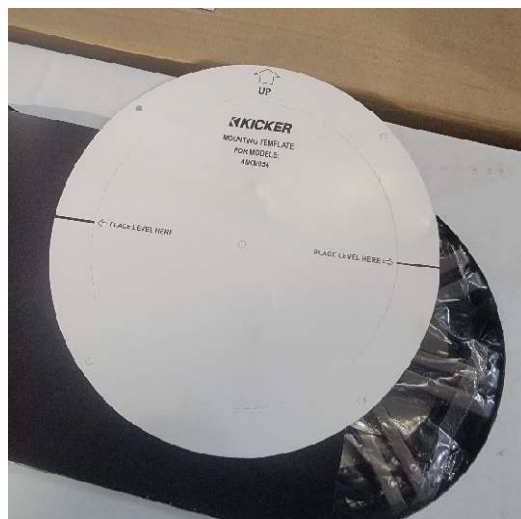
For a list of more products we offer please visit marqcadeng.com or message us on facebook at marqCAD Engineering if you don't see what you are looking for on the website.

- For Max machines remove the rear headliner by removing the side T20 Qty-2 bolts like the front and then the additional two rear bolts and two center bolts.



Radio Mounting/Front Speaker Mounting

- Using the cut templates that come with the radio and the speakers, mark out and cut the two side speaker locations along with the center location for the radio in the plastic headliner. Using the hardware that comes with the radio and speakers mount the items to the plastic headliner. Mounting instructions and options can be found in the packaging of the radio and speakers.



Thank you for your purchase.

For a list of more products we offer please visit marqcadeng.com or message us on facebook at marqCAD Engineering if you don't see what you are looking for on the website.

RGB LED Controller Mounting

- The wetsounds controller installs just like a rocker switch. Any blank switch panel location can be used for this controller. The power wires with ring terminals that come with the controller should be attached to the power source terminal in the roof. This is keyed power.

Rear/Mid Speaker Mounting

- Follow the supplied C-werks speaker mount instructions and use the supplied hardware to mount it to the OEM roof.



Thank you for your purchase.

For a list of more products we offer please visit marqcadeng.com or message us on facebook at marqCAD Engineering if you don't see what you are looking for on the website.

Amp Mounting (Except Stage 1)

- Remove the bolts at the top of the roof so that the front side of the roof can be lifted up to gain access to the front for amp mounting.
- Using wood or something else as a spacer lift up the roof and place the spacer item between roof and roll cage to hold the roof up while mounting the amp.



- The amp will be mounted on the passenger front under the plastic headliner. Amps should be held in place and holes marked for drilling. Drill holes using 5/32" drill and it is suggested to paint the bare metal to protect it. Mount the amp using the supplied hardware.



Thank you for your purchase.

For a list of more products we offer please visit marqcadeng.com or message us on facebook at marqCAD Engineering if you don't see what you are looking for on the website.

- Once it is mounting the roof can be bolted back in place.

Subwoofer Mounting (Except Stage 1)

- For max machines remove the plastic divider part.



- The subwoofer will come with its own mounting frame and installation instructions. Follow these instructions to mount the subwoofer under the drivers seat. Best way is to install the sub to the mount, put it in place to make sure clearances are good, and mark two outer corners. Remove the sub and then use the marked out corners to line up and mount the frame to the floor of the machine. Then the subwoofer can be re-installed to the mount.

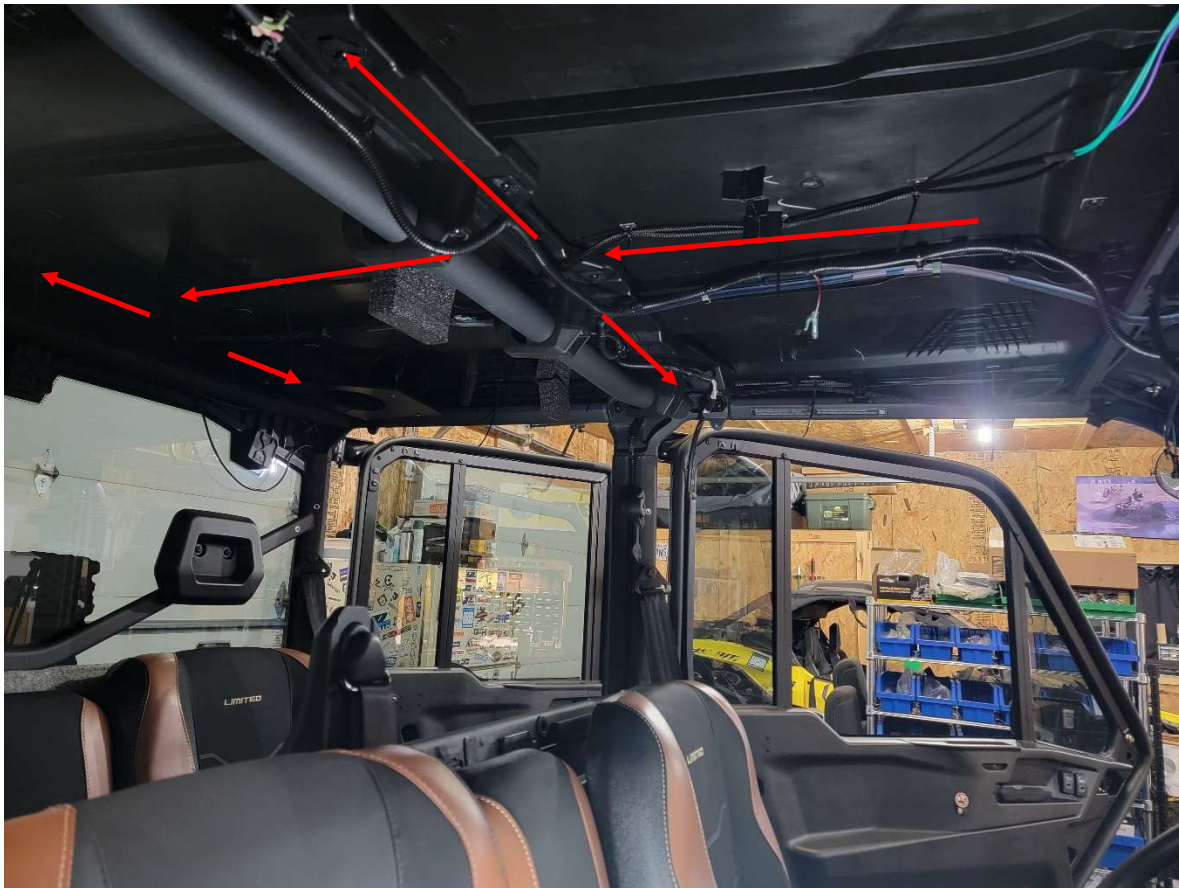


Thank you for your purchase.

For a list of more products we offer please visit marqcadeng.com or message us on facebook at marqCAD Engineering if you don't see what you are looking for on the website.

Wire Routing

- The wire harnesses for the speakers will be labeled for location and if you have the LED option on the speakers those wires will be labeled for location as well. Speaker harnesses for the rear should be ran down the center of the roof and then split to each side speaker. The front speakers will just have the harnesses ran to both along the front part of the cage that will be covered up by the plastic headliner. All of the wires can be held in place using the supplied adhesive back zip tie mounts and zip ties.



Thank you for your purchase.

For a list of more products we offer please visit marqcadeng.com or message us on facebook at marqCAD Engineering if you don't see what you are looking for on the website.



Amp Wiring (Except Stage 1)

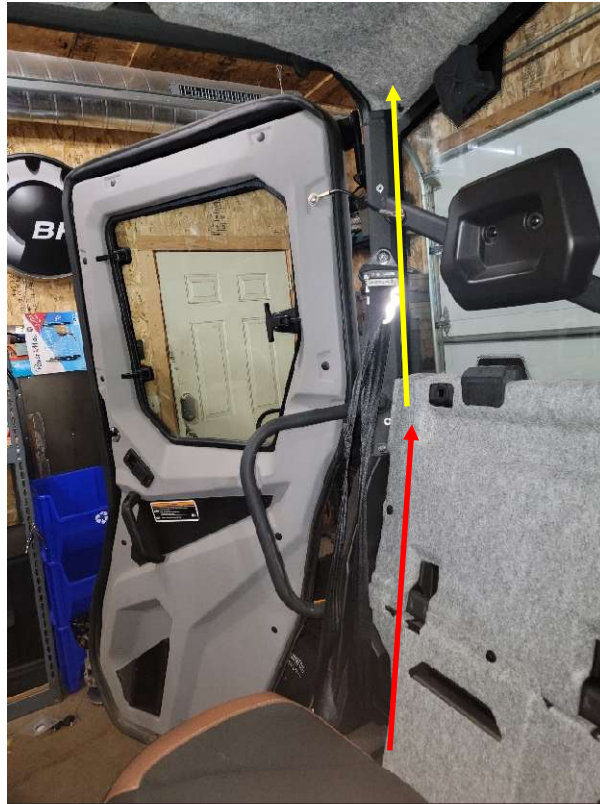
- Mount the fuse holder in the battery location as shown in the below picture. Make sure that the short red large gauge wire can reach from the battery to the fuse location before mounting.



Thank you for your purchase.

For a list of more products we offer please visit marqcadeng.com or message us on facebook at marqCAD Engineering if you don't see what you are looking for on the website.

- The rest of the large gauge wire can run from the battery negative terminal and the other side of the fuse holder up under the rear firewall carpet and up the roll cage on the passenger side of the machine up to the roof. These wires can then be run down along the side of the cage to the amp using the supplied zip ties and adhesive back mounts. The $\frac{3}{4}$ " Plastic wire loom can be used to cover up the wires from the top of the firewall carpet up to the roof (yellow arrow Section). Drill/deburr holes in the upper metal section as shown by green arrow to run wires to amp.



Thank you for your purchase.

For a list of more products we offer please visit marqcadeng.com or message us on facebook at marqCAD Engineering if you don't see what you are looking for on the website.

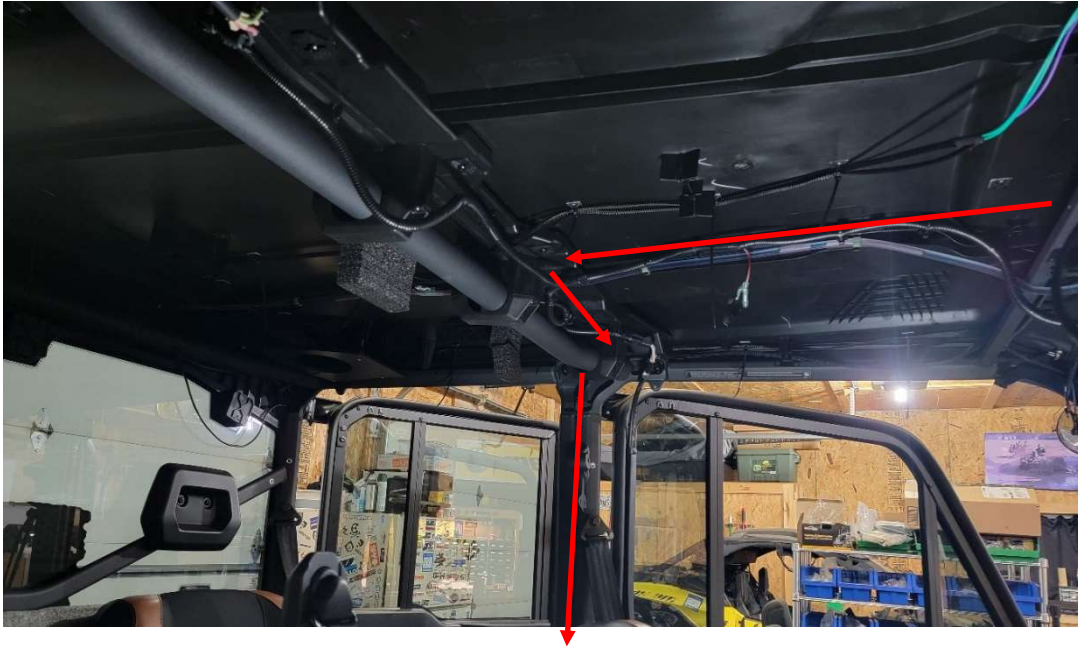


Sub Wire Routing (Stage 4 and 5)

- The subwoofer wiring can be ran from the amp output down the center of the machine then across following the rear or if you have a max the middle speaker wire, then down the cage to under the driver seat where the sub is located. For max machines the small plastic wire loom can be put over the wires and then wedged into the slot in the roll cage to hold in place.

Thank you for your purchase.

For a list of more products we offer please visit marqcadeng.com or message us on facebook at marqCAD Engineering if you don't see what you are looking for on the website.



Radio to Amp Wires

- The radio harness that has the white plug has a power and ground wire attached to it with ring terminals that should be connected to the power terminal on the cage. This is keyed power connection.
- RCA Connections, Amp Input Connections, and Remote wire have labeled ends and should be attached as labeled between the radio harness and the amplifier.



Thank you for your purchase.

For a list of more products we offer please visit marqcadeng.com or message us on facebook at marqCAD Engineering if you don't see what you are looking for on the website.



Antenna mounting

- Find a location in the plastic roof that the antenna wire can reach the radio and that will not interfere with any plastic ribs in the roof. Drill a 7/32" hole for the antenna to mount through, and tighten in place. Rubber part should be on the outside of the roof for sealing out water.

Rear/Mid Speaker Mounting

- Re-install the headliner/s in reverse order of removal. Using a box cutter poke through the center of the speaker mount and then cut out around the inside of the speaker mount. Then the speakers can be hooked up to the speaker harnesses and LED harnesses, held in place to drill pilot holes, and then mounted using the longer supplied screws. The screws that come with the speakers for the rear and middle will not be long enough to mount through headliner and into mounts.

Thank you for your purchase.

For a list of more products we offer please visit marqcadeng.com or message us on facebook at marqCAD Engineering if you don't see what you are looking for on the website.



Testing functionality

- Double check all wire connections to make sure they are hooked up properly.
- At this point hold up the front plastic headliner and connect the plugs to the radio and the optional wetsounds LED controller. The headliner can then be held in place by a couple screws. The radio and LED controller can now be turned on to test functionality.

Finishing

- At this point once everything is tested the front plastic headliner/rearview mirror/ and plastic mid panel for the max machines can be re-installed.
- If your stage has an amp, the battery cover will need a notch cut in the back edge to allow clearance for the main power wires to run through. Once clearance is made it can be re-installed as well.

Thank you for your purchase.

For a list of more products we offer please visit marqcadeng.com or message us on facebook at marqCAD Engineering if you don't see what you are looking for on the website.



Thank you for your purchase.

For a list of more products we offer please visit marqcadeng.com or message us on facebook at marqCAD Engineering if you don't see what you are looking for on the website.