



Product: Maverick TrailSport Reverse Switch and Harness

Disclaimer: When installing any electrical kits remove the wire leads from the battery.

Instructions:

- Remove air filter access cover and the rear side panels from both the driver. The passenger side panel will give you access to the tail light harness plug. Arrows designate fasteners needing to be removed and then side panels can be unsnapped by pulling them out.



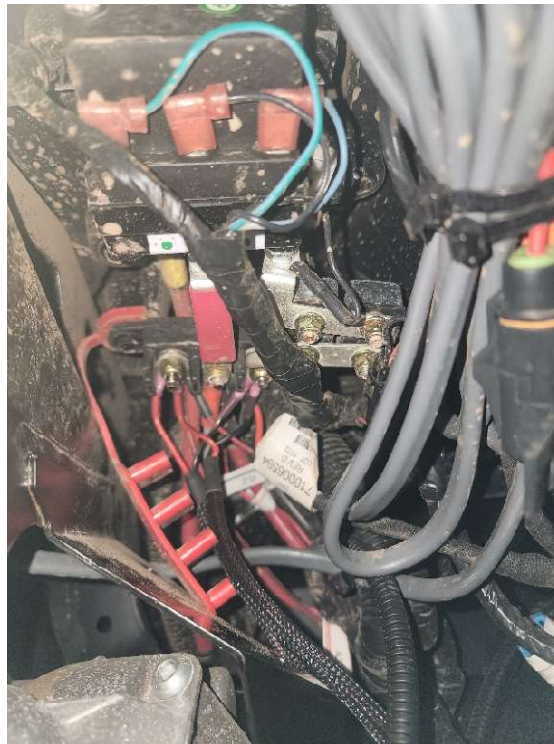
- Unplug the tail light harness connection and plug the supplied harness in line with the two OEM plugs that were disconnected. This is located on the passenger side just below/side of the tube frame.



Thank you for your purchase.

For a list of more products we offer please visit [marqcadeng.com](http://marqcadeng.com) or message us on facebook at marqCAD Engineering if you don't see what you are looking for on the website.

- The wire labeled reverse switch should be ran back by the airbox along the stock wiring and then along the transmission vent line to transmission linkage to where the switch will be installed.
- Amber Rocker Option
  - The wire labeled Rocker Out should be ran back by the airbox as well and then through the OEM wiring through the rear firewall, under the center plastic by the shifter and then up under the dash for the Rocker Switch.
  - The power harness will also connect to the rocker switch and the power terminal located on the right side of the steering column. The Ground (black wire) should be attached to the right post of the power terminal and the Power (Red Wire) should be attached to the left post of the power terminal, this is key power.

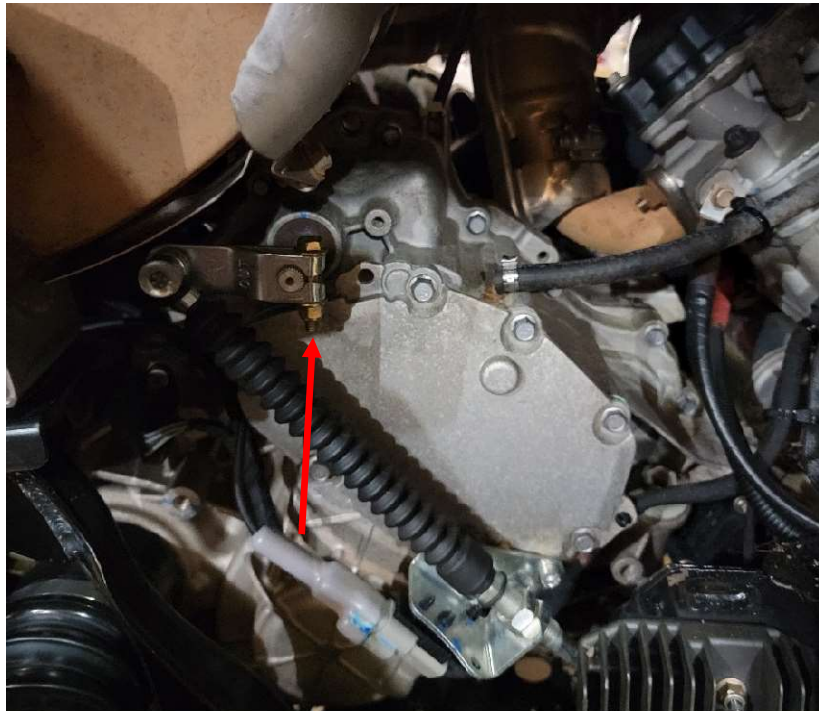


- Install the switch and switch jumpers as designated by the diagram at the end of this instruction.

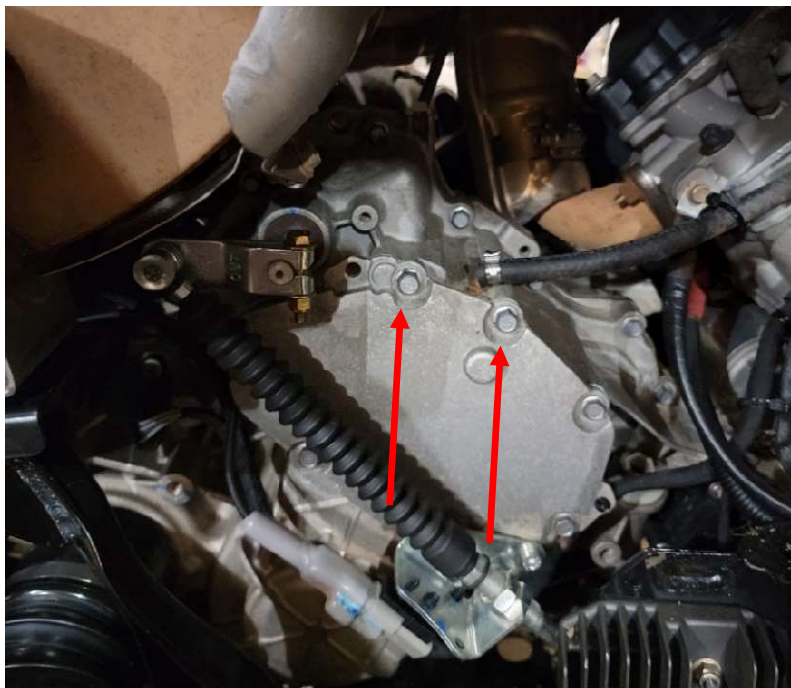
Thank you for your purchase.

For a list of more products we offer please visit [marqcadeng.com](http://marqcadeng.com) or message us on facebook at marqCAD Engineering if you don't see what you are looking for on the website.

- Remove the bolt from the shifter linkage on the transmission and replace it with the supplied bolt. The supplied bolt is a little longer than the OEM bolt. Do not remove the linkage itself because if not put on correctly the machine will not shift into the gears properly.



- Slide the switch to the bottom of the bracket to have the best access to the mounting bolt holes.
- Remove the top two bolts from the transmission shown in the picture below.



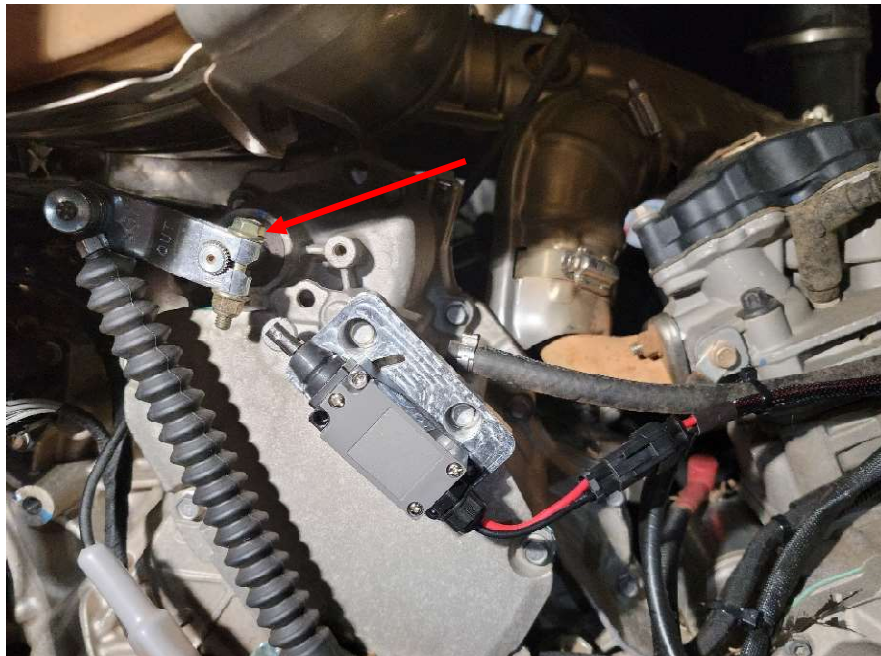
Thank you for your purchase.

For a list of more products we offer please visit [marqcadeng.com](http://marqcadeng.com) or message us on facebook at marqCAD Engineering if you don't see what you are looking for on the website.

- The two holes in the switch bracket will line up and mount to the holes in the transmission where the bolts were removed. Reuse the bolts that were taken out to attach the bracket to the transmission. These should be tightened down to 90in/lbs.



- If the bolt seems like it is too long and binding on the switch while shifting into reverse add the supplied washers to the bolt head side of the shifter linkage bolt.



Thank you for your purchase.

For a list of more products we offer please visit [marqcadeng.com](http://marqcadeng.com) or message us on facebook at marqCAD Engineering if you don't see what you are looking for on the website.

- Plug the switch into the harness end labeled Reverse Switch. Finish wiring your accessory to the output side of the harness, re connect your battery, and test the functionality. Then tie up all wires with supplied zip ties and reinstall all the panels removed for installation.

Thank you for your purchase.

For a list of more products we offer please visit [marqcadeng.com](http://marqcadeng.com) or message us on facebook at marqCAD Engineering if you don't see what you are looking for on the website.