

Product: Maverick Trail/Sport Tail Light Kit

Disclaimer: When installing any electrical kits remove the wire leads from the battery.

Instructions:

- Remove air filter access cover and the rear side panels from both the driver and passenger side. The passenger side panel will give you access to the tail light harness plug and the driver side will allow you to route the wires more easily. Arrows designate fasters needing to be removed and then side panels can be unsnapped by pulling them out.



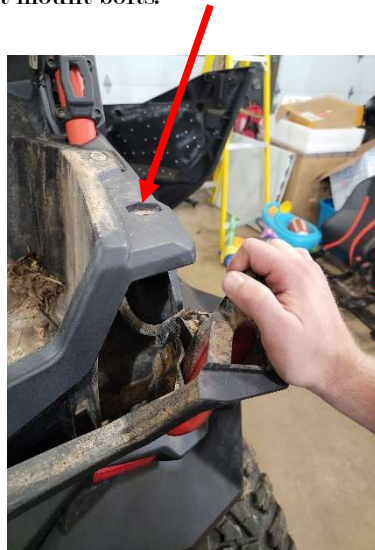
Thank you for your purchase.

For a list of more products we offer please visit marqcadeng.com or message us on facebook at marqCAD Engineering if you don't see what you are looking for on the website.

- Unplug the tail light harness connection and plug the supplied harness in line with the two OEM plugs that were disconnected. This is located on the passenger side just below/side of the tube frame.



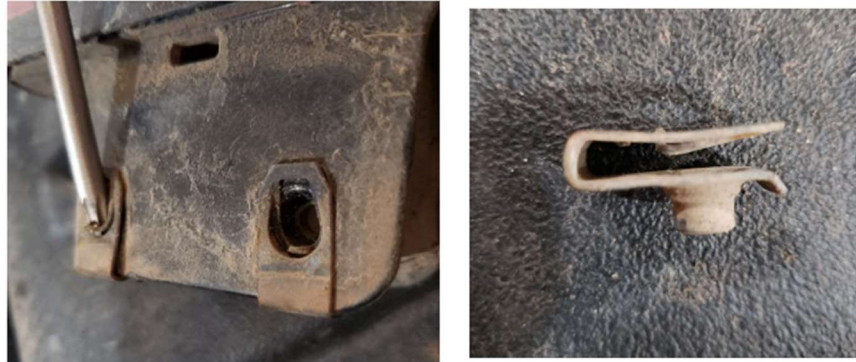
- The wire labeled reverse switch should be ran back by the airbox along the stock wiring and then along the transmission vent line to transmission linkage to where the switch will be installed.
- Connect the light harness that has driver and passenger labels on the ends to the previously installed harness. The connection end labeled driver should be ran back by the airbox and then along the firewall to the driver side of the machine making sure it will not touch any motor parts or exhaust parts that will get hot. From there it will then run along the OEM Wires back toward the driver side tail light. The passenger side will just run along the OEM wires back toward the passenger tail light.
- Remove the top bolts on either side of the rear end of the bed. Then gently pull back the plastic to gain access to the tail light mount bolts.



Thank you for your purchase.

For a list of more products we offer please visit marqcadeng.com or message us on facebook at marqCAD Engineering if you don't see what you are looking for on the website.

- Remove the two metal clips from the OEM tail lights by lifting up on the inside of the clip and sliding it off. Make sure the clip inner looks like the picture below so it latches to the new light correctly.



- Slide the clips on the correct side of the new tail light and install the light in the reverse order of removing the OEM tail light.
- Trim the bottom plastic where the inside of the tail light sits to create clearance for the new light. Example is shown below. Only remove enough plastic to get the light to fit, removing too much may compromise the rigidity of the plastic.

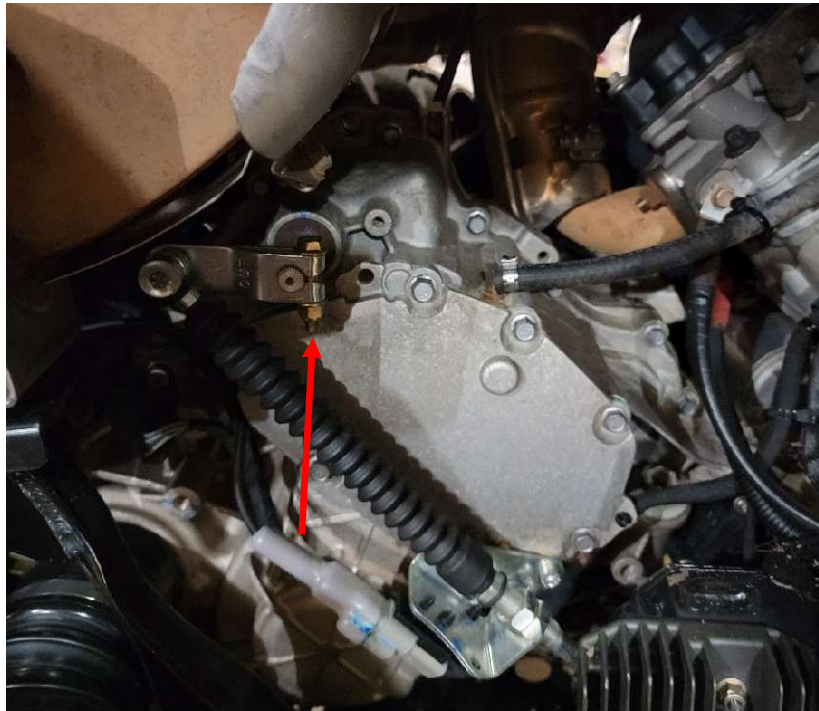


- Re-install the tail light using the original bolts taken out and then plug the OEM tail light plug into the tail light and connect the yellow wire from the supplied reverse light harness to the yellow plug on the tail light. Push the rear plastic back into place and re-install the screws at the top of the bed.

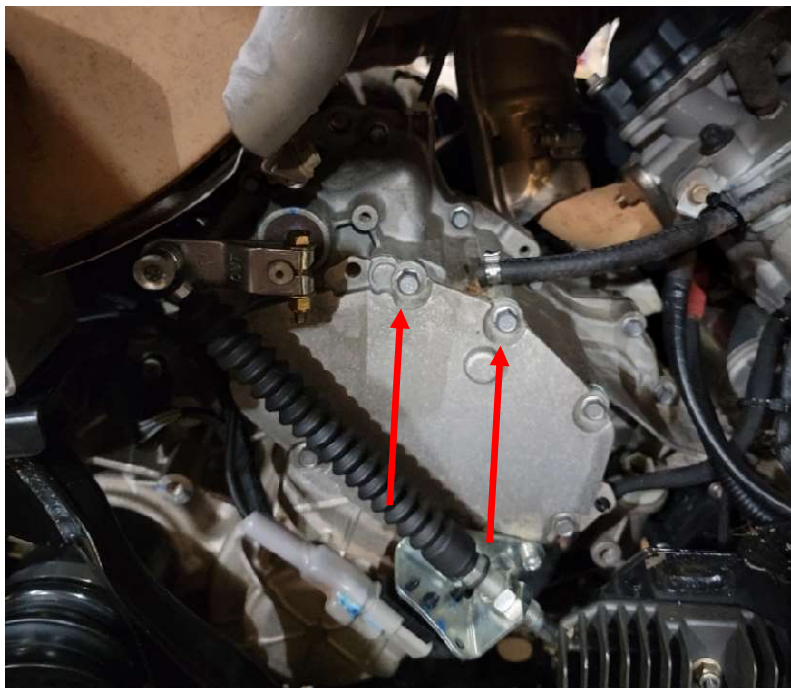
Thank you for your purchase.

For a list of more products we offer please visit marqcadeng.com or message us on facebook at marqCAD Engineering if you don't see what you are looking for on the website.

- Remove the bolt from the shifter linkage on the transmission and replace it with the supplied bolt. The supplied bolt is a little longer than the OEM bolt. Do not remove the linkage itself because if not put on correctly the machine will not shift into the gears properly.



- Slide the switch to the bottom of the bracket to have the best access to the mounting bolt holes.
- Remove the top two bolts from the transmission shown in the picture below.



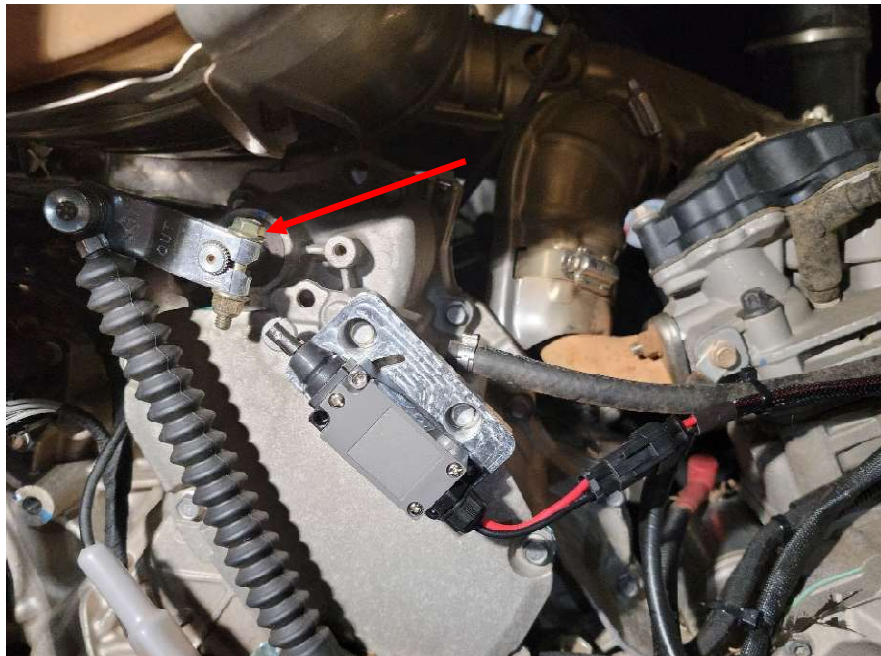
Thank you for your purchase.

For a list of more products we offer please visit marqcadeng.com or message us on facebook at marqCAD Engineering if you don't see what you are looking for on the website.

- The two holes in the switch bracket will line up and mount to the holes in the transmission where the bolts were removed. Reuse the bolts that were taken out to attach the bracket to the transmission. These should be tightened down to 90in/lbs.



- If the bolt seems like it is too long and binding on the switch while shifting into reverse add the supplied washers to the bolt head side of the shifter linkage bolt.



Thank you for your purchase.

For a list of more products we offer please visit marqcadeng.com or message us on facebook at marqCAD Engineering if you don't see what you are looking for on the website.

- Plug the switch into the harness end labeled Reverse Switch, re connect your battery, and test the functionality of all the lights. Once all the functions are tested and working properly then the side panels can be re-installed in the opposite order of removal.



Thank you for your purchase.

For a list of more products we offer please visit marqcadeng.com or message us on facebook at marqCAD Engineering if you don't see what you are looking for on the website.