



Product: G2 Commander/Maverick Trail-Sport Reverse Light Kit

Disclaimer: Disconnect the battery when installing any electrical components.

Instructions:

- Feed the open plug ends of the cage harness up through the bottom of the driver side front cage pillar. Use the slots in the side of the pillar to help run the wire up to the top exit hole.



Thank you for your purchase.

For a list of more products we offer please visit marqcadeng.com or message us on facebook at marqCAD Engineering if you don't see what you are looking for on the website.

- Run the open plug ends to the backside of the cage corner, and attach the plug end following the supplied plug end instructions.
- Mount the light housings with the supplied screws. Once mounted drill out the center hole and top holes through the housing and the roof. Then center hole is for the KC light mounting screw and the top hole is for the light wiring to run through.



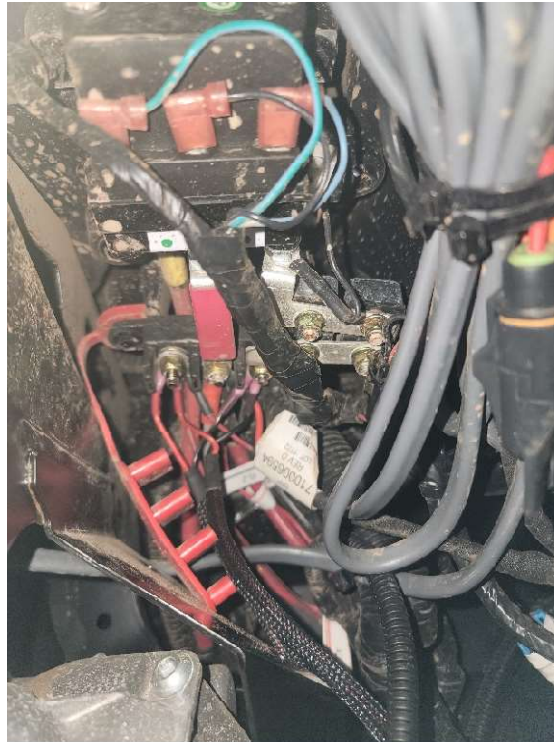
- Run the light harness along the backside of the cage and connect the lights and the plug end from the cage harness.
- In the driver side wheel well there will be a rubber boot that has other wires running from inside of the cab through the fire wall. Cut the end zip tie off the rubber boot and feed the other end of the cage harness through the rubber boot into the cab.



Thank you for your purchase.

For a list of more products we offer please visit marqcadeng.com or message us on facebook at marqCAD Engineering if you don't see what you are looking for on the website.

- Once it is run through the cab connect it to the power harness. The power harness will also connect to the rocker switch and the power terminal located on the right side of the steering column. The Ground (black wire) should be attached to the right post of the power terminal and the Power (Red Wire) should be attached to the left post of the power terminal, this is key power.



- Verify that the lights work, and then use the supplied zip ties and mounts to secure the wires. Any slack wire can be pulled through into the cab and tied up below the dash. Remember to also put a zip tie back around the rubber firewall boot as well.

Thank you for your purchase.

For a list of more products we offer please visit marqcadeng.com or message us on facebook at marqCAD Engineering if you don't see what you are looking for on the website.