



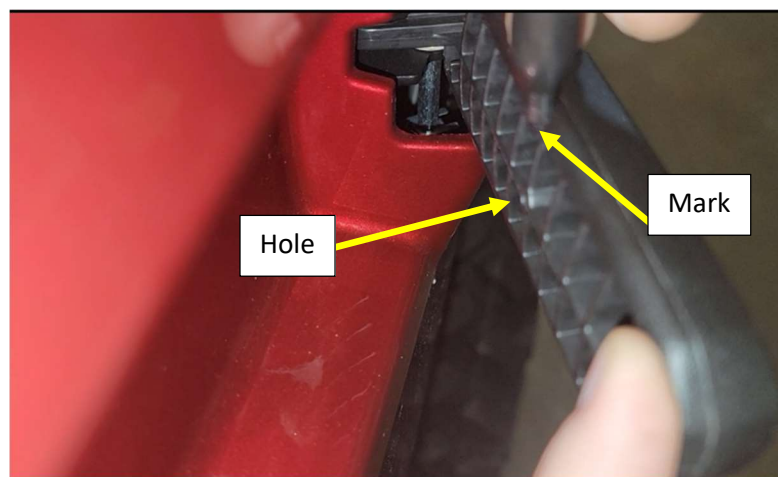
Product: Can-Am Defender 2023+ Door Lock Kit

Disclaimer: Kit will not 100% keep someone from breaking in your machine. If someone wants to get in your machine bad enough, they will find a way.

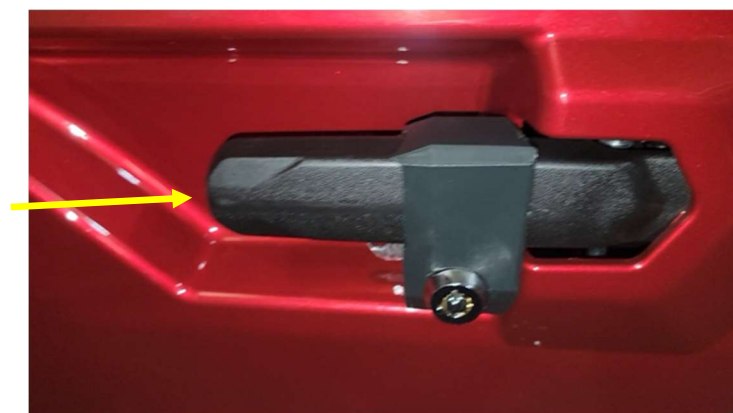
Instructions:

Process will be the same for both driver and passenger sides.

- Pull back the door handle and make a mark above the hole in the center of the handle. This will help with the installation and line up process.



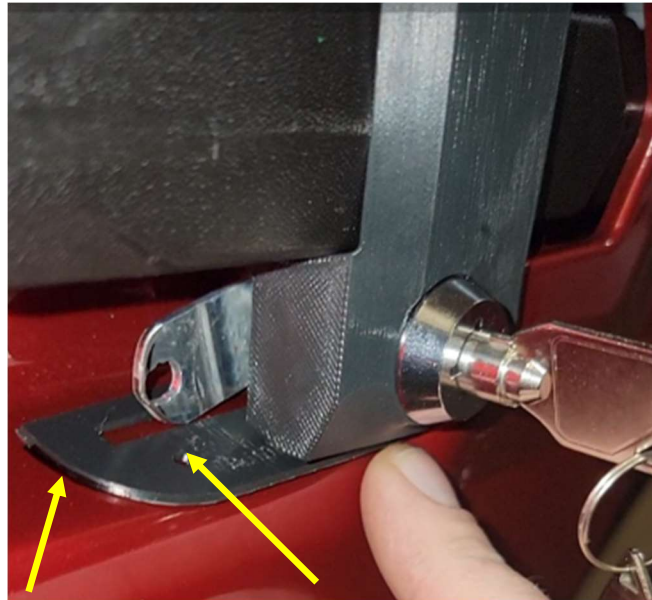
- Slide the lock over the end of the handle and line up the hole on the backside of the lock with the mounting hole marked in the previous step.



Thank you for your purchase.

For a list of more products we offer please visit marqcadeng.com or message us on facebook at marqCAD Engineering if you don't see what you are looking for on the website.

- Place the drill template in place, using the key lower the lock tab into the slot to line up the cut template for the slot. Mark the end of the drill template and rear hole. Remove the template, and slide the lock off of the handle.

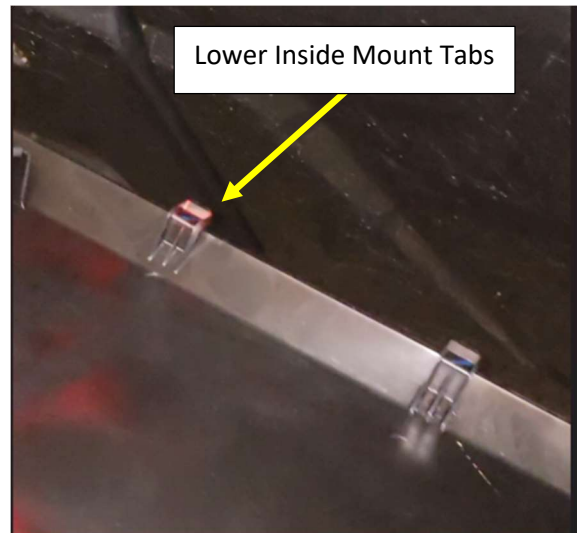
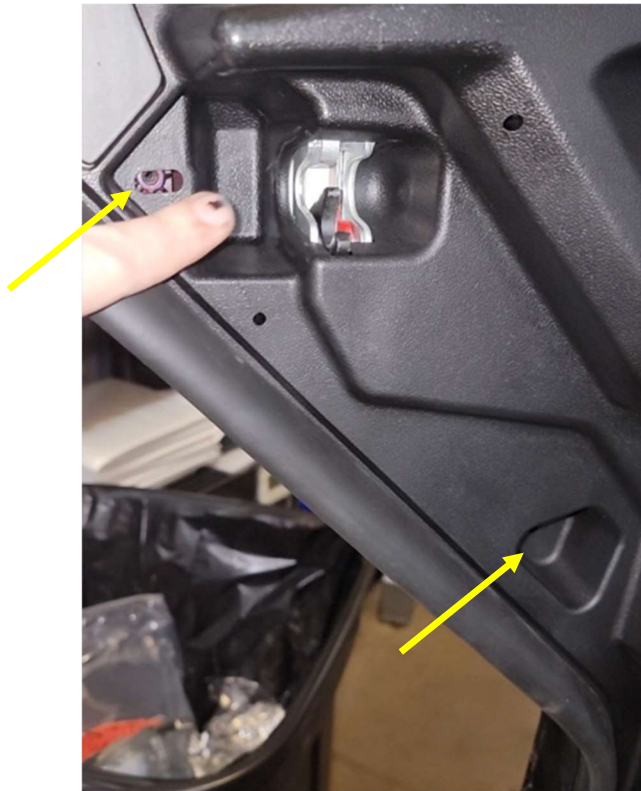


- Remove the 3 T30 Torx bolts and 1 T20 Torx on the inside of the door panel. To remove the colored outer panel, start on the top front and pull the panel out along the top edge to un-snap it, then lift the panel up and back to clearance past the handle and the bottom hook tabs on the colored panel.



Thank you for your purchase.

For a list of more products we offer please visit marqcadeng.com or message us on facebook at marqCAD Engineering if you don't see what you are looking for on the website.



Thank you for your purchase.

For a list of more products we offer please visit marqcadeng.com or message us on facebook at marqCAD Engineering if you don't see what you are looking for on the website.

- Place the template on the marked line and hole and drill out the two locations with a 1/8" drill bit.



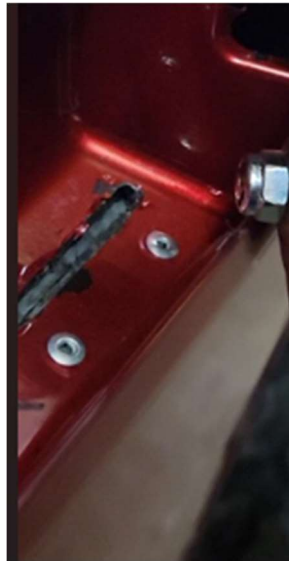
- Once drilled on the inside of the door, hold the metal backing plate in place by pushing the rivets into the holes. Do not fully install rivets in this step. Cut out the slot in the plastic using the metal backer as a cut template. The slot in the metal plate should always be to the rear of the door panel.



Thank you for your purchase.

For a list of more products we offer please visit marqcadeng.com or message us on facebook at marqCAD Engineering if you don't see what you are looking for on the website.

- Before installing the backing plate fully, re-install the colored panel on the door without installing the bolts. Slide the lock back onto the door handle and put it into the lock position to verify that the slot was cut correctly before the backing plate is installed.
- Remove the colored panel again and install the metal backing plate to the plastic using the rivets from the outside of the door panel. (Rivets put in Reverse from when the step when the slot was cut) Picture below for installed reference orientation.



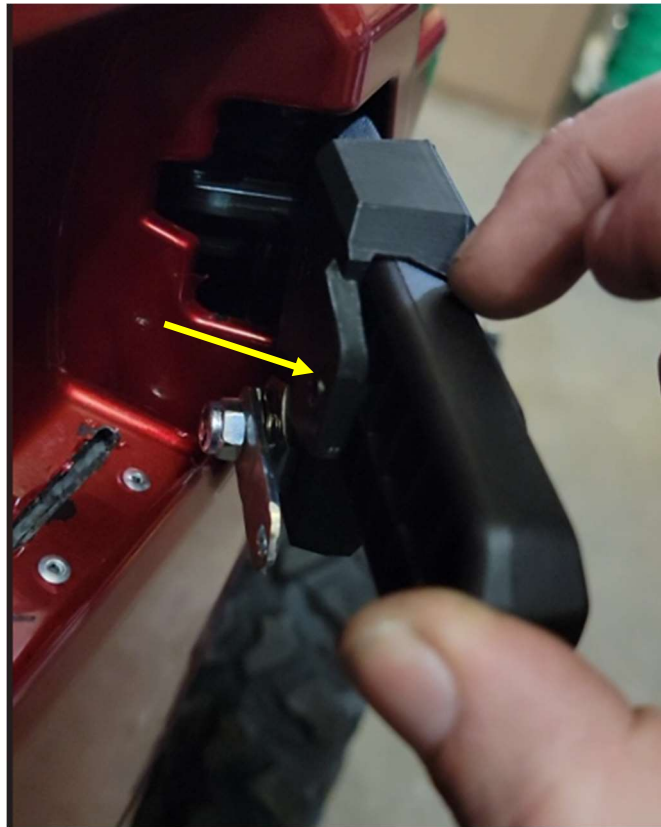
- Once installed the door panel can be final installed with the bolts. Be sure that the metal clips for mounting are installed on the colored panel side before installation. There are 4 clips.



Thank you for your purchase.

For a list of more products we offer please visit marqcadeng.com or message us on facebook at marqCAD Engineering if you don't see what you are looking for on the website.

- Slide the lock back on the door panel and attach it to the door handle using the supplied Phillips screw and 90 Degree screwdriver.



Thank you for your purchase.

For a list of more products we offer please visit marqcadeng.com or message us on facebook at marqCAD Engineering if you don't see what you are looking for on the website.