

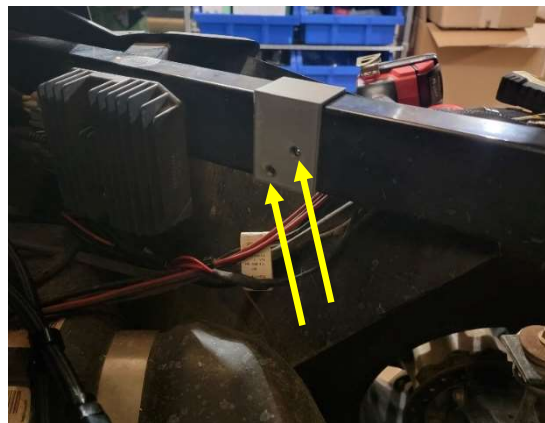


Product: Defender Oil Filter Adapter Kit

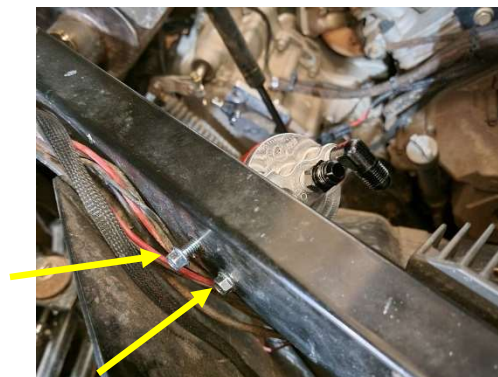
Disclaimer: Check with your dealer if you have any questions on how this will affect any warranty before installation. Will require more oil once installed than manual states.

Instructions:

- **Note:** Best time to install this kit is when your machine needs an oil change. Drain all oils then install the kit.
- Lift up your bed to gain access to where the filter adapter will be mounted and hoses will be run.
- Using the supplied drill template, place it over the top of the frame as shown in the picture below and drill two 1/4" holes through the frame. We suggest after drilling that you coat the inside of the holes with black paint to help protect from corrosion and rusting.



- Install the filter housing on the inside of the frame by securing with the two supplied bolts through the previously drilled holes.



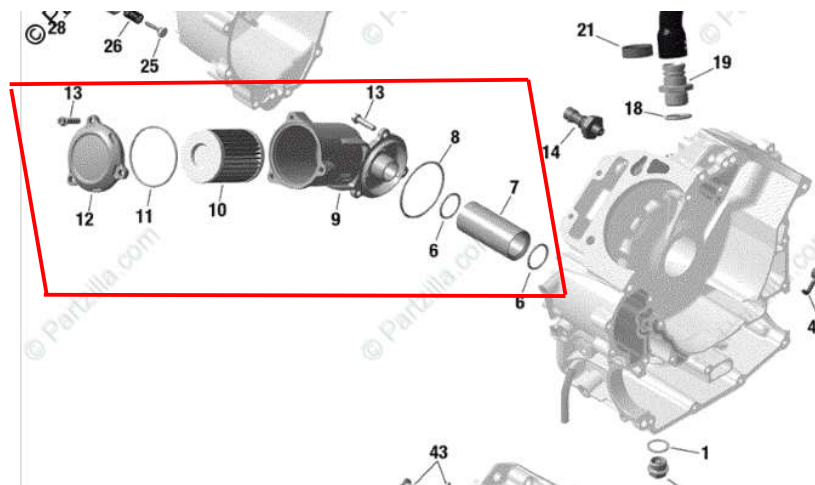
Thank you for your purchase.

For a list of more products we offer please visit [marqcadeng.com](http://marqcadeng.com) or message us on facebook at marqCAD Engineering if you don't see what you are looking for on the website.

- For engine side filter adapter gain access to the stock oil filter by removing the rear passenger seat back, the lower carpeted firewall liner, and the bolts around the lower plastic firewall cover. Then Remove the cover.



- For Limited/Cab Models it is not necessary to remove the current oil filter adapter parts, but they can be for less failure points over time. These parts are outlined in the picture below. For the other model machines just remove the stock cover.



- Remove the stock oil filter cover and filter. Remove the gasket from the stock oil filter and install it onto the end of the engine side adapter as shown below. Be sure the supplied o-ring is installed on the engine side adapter as well.



Thank you for your purchase.

For a list of more products we offer please visit [marqcadeng.com](http://marqcadeng.com) or message us on facebook at marqCAD Engineering if you don't see what you are looking for on the website.

- Install the engine side adapter with the 3 bolts that were used for the OEM filter cover.
- Install the hose fittings to the oil filter mounted to the frame finger tight to start. The hoses and lines will be marked with red and yellow paint marker. Red marked fittings should go together and yellow fittings should go together.



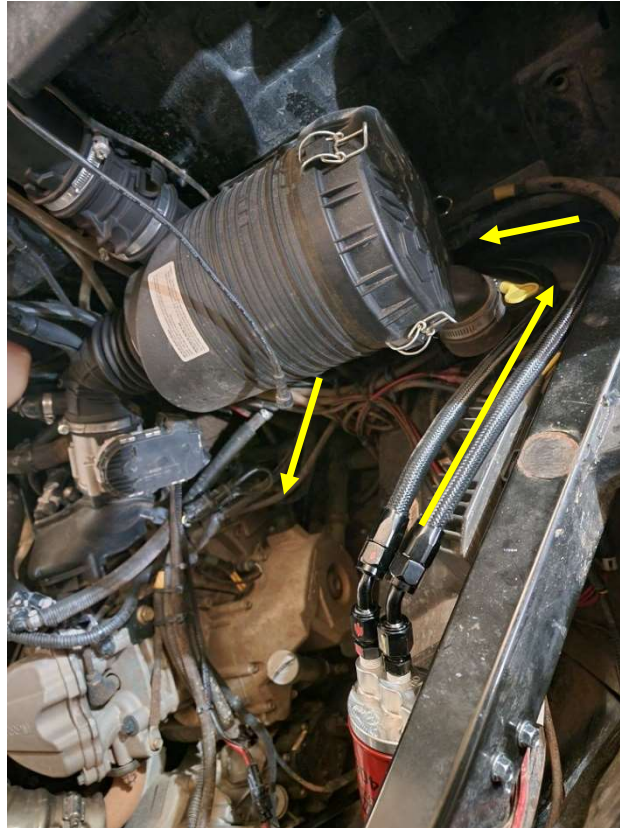
- Install the hose separator clamps about 6-8in from each end and one in the middle of the hoses. This will help keep them together while feeding the lines down to the motor and help keep them from rubbing against each other.



- Feed the lines around the top of the gas tank, around along the firewall under air filter and down to the engine filter adapter. Be sure that the lines are not bent to tight causing and line kinks. Be sure that the lines are not ran to close to the exhaust manifold or the front driveshaft.

Thank you for your purchase.

For a list of more products we offer please visit [marqcadeng.com](http://marqcadeng.com) or message us on facebook at marqCAD Engineering if you don't see what you are looking for on the website.



- Install the lines to the motor side adapter the same way as the filter adapter. Red fittings together and yellow fittings together. Tighten all 4 of the hose fittings to the adapters.
- Add the recommended amount of oil to start as if you were doing a normal oil change. Run the machine for 15-30 seconds and then check the oil level and add the necessary amount so oil level is correct on the dip stick.
- Run the machine again for awhile to heat up the system and check for any leaks.
- Secure the oil lines using the supplied zip ties as you see fit along the firewall.

Thank you for your purchase.

For a list of more products we offer please visit [marqcadeng.com](http://marqcadeng.com) or message us on facebook at marqCAD Engineering if you don't see what you are looking for on the website.