

Product: Can-Am Defender Side Cup Holder Inserts

Disclaimer: This product is intended for non-alcoholic beverages and containers. Please don't drink and drive.

Instructions:

- Wedge a flat tip screw driver in the front part of the stock cup holder and pry up to free the mounting tab.



- Wedge the screw driver in the rear part of the stock insert and pry up to release the mounting tabs. In some cases, these mounting tabs may get damaged in removal.



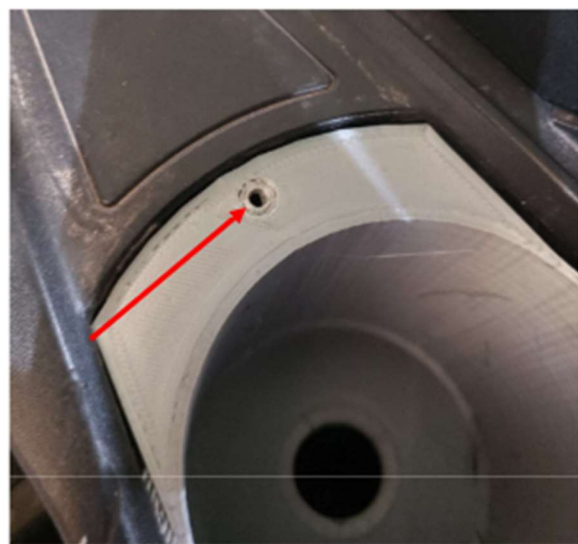
Thank you for your purchase.

For a list of more products we offer please visit marqcadeng.com or message us on facebook at marqCAD Engineering if you don't see what you are looking for on the website.

- Start on side of the new cup holder insert just at the edge of the dash. Tap the other side with the palm of your hand to get the cup holder to slide into place. This may take some force to get it started.



- Now the inset is installed. If you would like the extra peace of mind that the insert will not move there is a screw hole in the backside that you can use to hold the insert in place but is not necessary in all applications.



Thank you for your purchase.

For a list of more products we offer please visit marqcadeng.com or message us on facebook at marqCAD Engineering if you don't see what you are looking for on the website.