



Product: Defender Metal Cup Holder Inserts

Disclaimer: Remember to cut smaller at first and then little by little make the opening bigger to get best fitment of the insert.

Instructions:

- Wedge a flat tip screw driver in the front part of the stock cup holder and pry up to free the mounting tab.



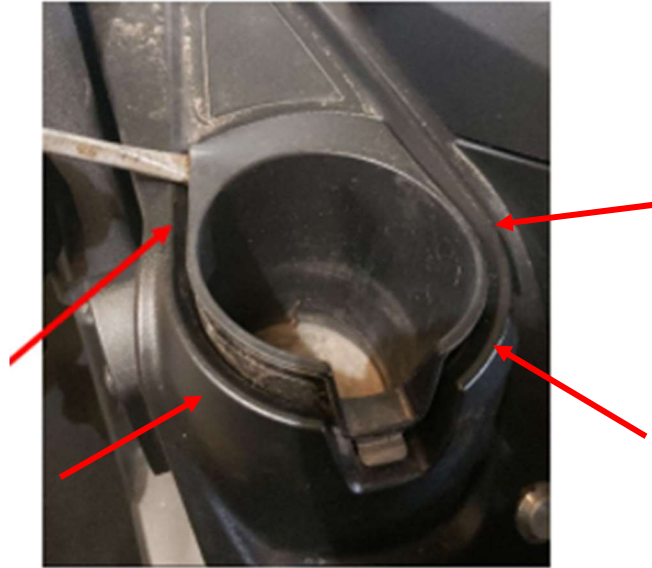
- Wedge the screw driver in the rear part of the stock insert and pry up to release the mounting tabs. In most cases the mounting tabs will break off.



Thank you for your purchase.

For a list of more products we offer please visit marqcadeng.com or message us on facebook at marqCAD Engineering if you don't see what you are looking for on the website.

- Cut around the inside perimeter of the dash plastic. Make the cuts bigger until the insert fits into place.



- Slide the insert into place.

Thank you for your purchase.

For a list of more products we offer please visit marqcadeng.com or message us on facebook at marqCAD Engineering if you don't see what you are looking for on the website.

•

Thank you for your purchase.

For a list of more products we offer please visit marqcadeng.com or message us on facebook at marqCAD Engineering if you don't see what you are looking for on the website.